

RANGE	CODE	MODEL	FUNCTION
MO - 70	CRI500900	NEFT74ELCVG	Griddles

ITEM

Electric griddle top with smooth chromed plate on open stand

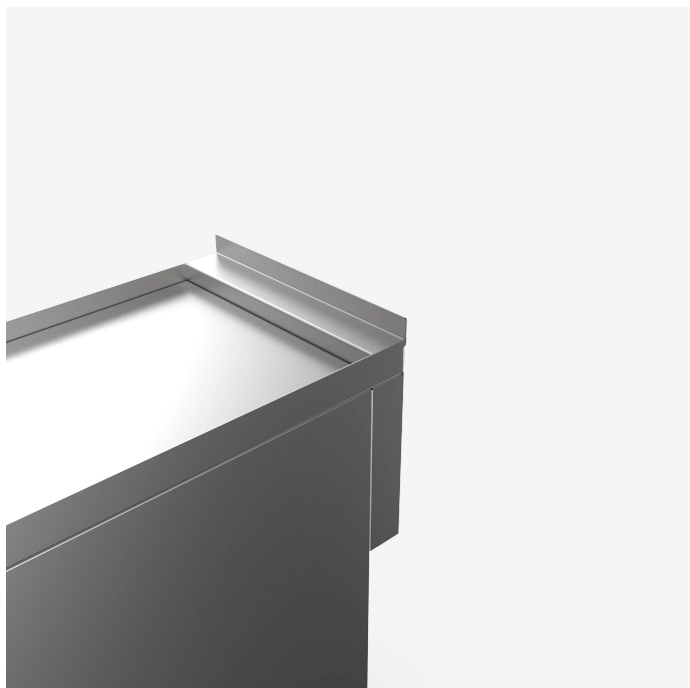


RANGE	CODE	MODEL	FUNCTION
MO - 70	CRI500900	NEFT74ELCVG	Griddles

ITEM

Electric griddle top with smooth chromed plate on open stand

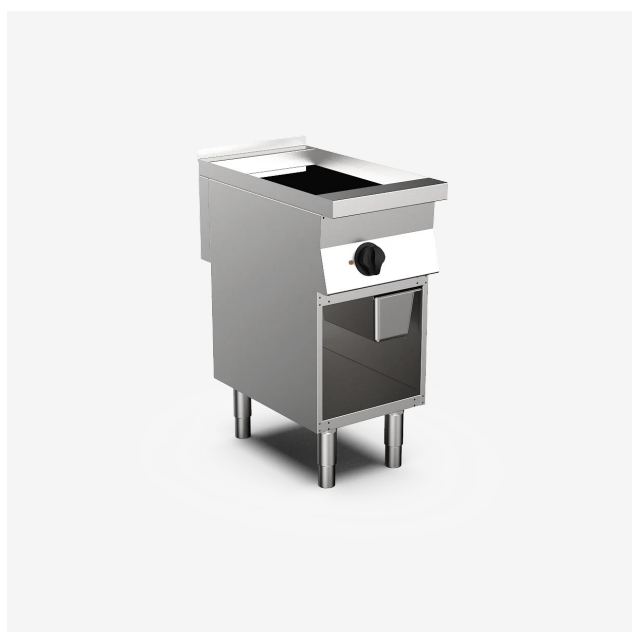
DETAILS



RANGE	CODE	MODEL	FUNCTION
MO - 70	CRI500900	NEFT74ELCVG	Griddles

ITEM

Electric griddle top with smooth chromed plate on open stand



TECHNICAL SPECIFICATIONS

WIDTH (mm):	400
DEPTH (mm):	700
HEIGHT (mm):	870
WEIGHT (Kg):	50
VOLUME (m ³):	0.4
EL. POWER (kW):	3.9
VOLTAGE:	380-415 V 3N
INTERNAL BASE UNIT DIM. (mm):	360x560x340(h)
COOKING ZONES N°:	1
COOKING ZONES DIM. (mm):	396x555mm
PRODUCT SPECIFICATIONS:	Smooth Chromed Plate
IP GRADE:	IPX4
TEMP. RANGE (°C):	0-280 °C

DESCRIPTION

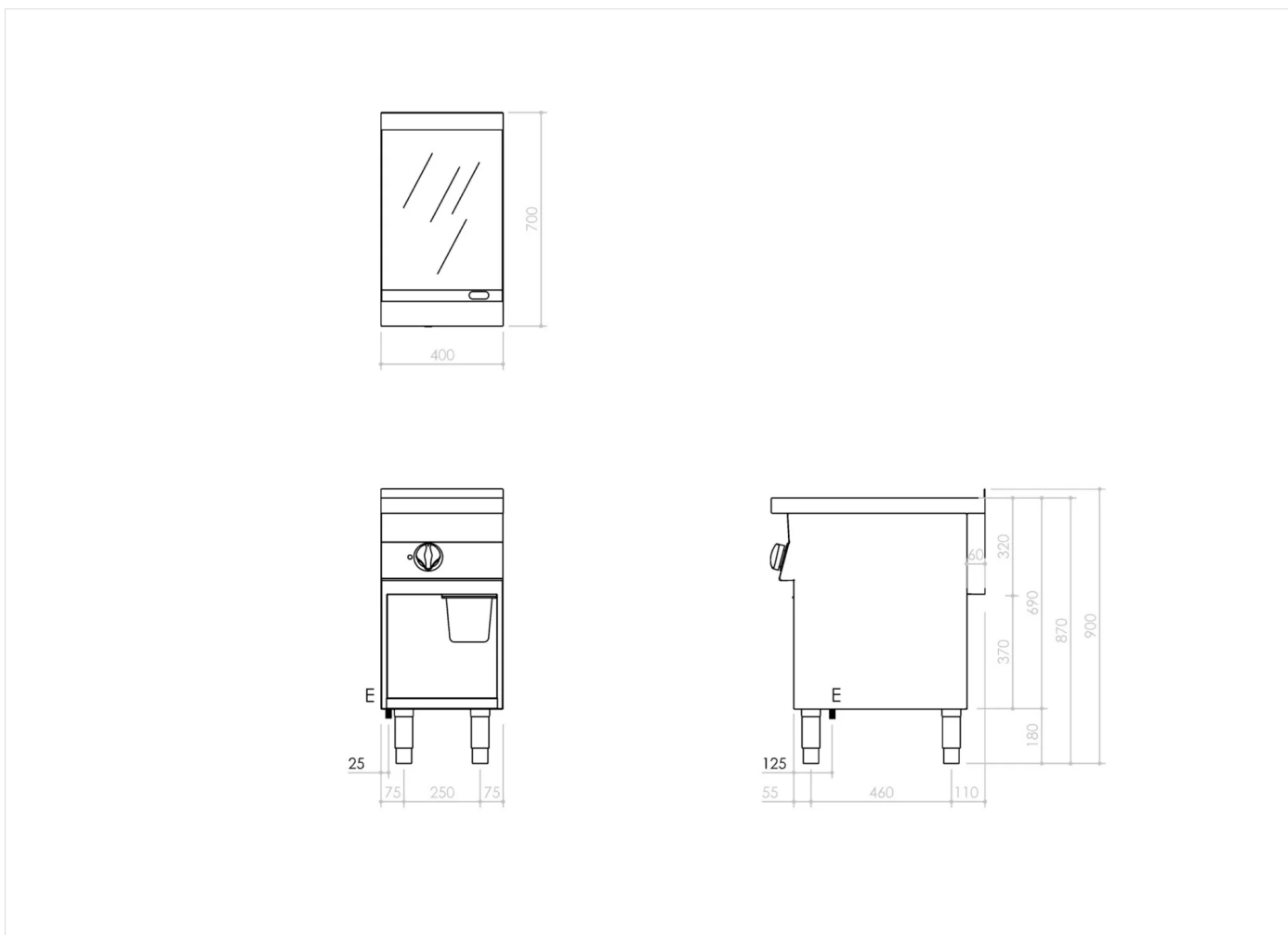
Electric griddle on open base unit with smooth chrome plate. Equipped with splash guard on three sides and a front drain channel to collect cooking liquids/fats towards a removable tray located under the cooking plate into the open base unit. Heating by armored heating elements positioned under the plate. One cooking zone controlled by an adjustable thermostat from 0 ° C to 300 ° C. Manual reset safety thermostat. Cooking surface 39.6x55.5 cm. plate-cleaning scraper supplied. Open base unit made of stainless steel. Height-adjustable feet in stainless steel. The product complies with the EC regulation 1935/2004 and the DM 21/03/1973 (Materials and Objects intended to come into contact with Food) MOCA.



RANGE	CODE	MODEL	FUNCTION
MO - 70	CRI500900	NEFT74ELCVG	Griddles

ITEM

Electric griddle top with smooth chromed plate on open stand



INSTALLATION SPECIFICATIONS

(E) Electrical Connection: **380-415 V 3N 50-60Hz**

