

RANGE	CODE	MODEL	FUNCTION
MO - 70	CR1307400	NEFT78EMIVG	Griddles

ITEM

Electric griddle top with 2/3 smooth and 1/3 ribbed plate in AISI 430 stainless steel on open stand

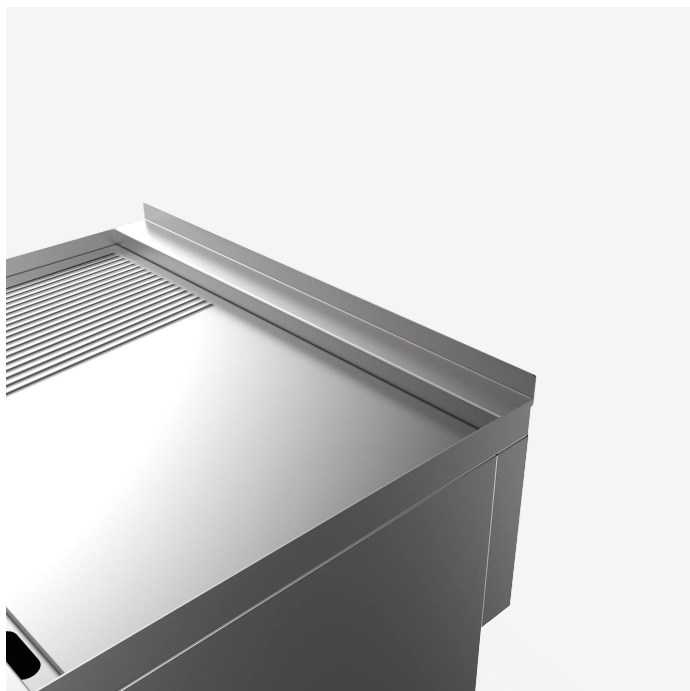


RANGE	CODE	MODEL	FUNCTION
MO - 70	CRI307400	NEFT78EMIVG	Griddles

ITEM

Electric griddle top with 2/3 smooth and 1/3 ribbed plate in AISI 430 stainless steel on open stand

DETAILS



RANGE	CODE	MODEL	FUNCTION
MO - 70	CRI307400	NEFT78EMIVG	Griddles

ITEM

Electric griddle top with 2/3 smooth and 1/3 ribbed plate in AISI 430 stainless steel on open stand



TECHNICAL SPECIFICATIONS

WIDTH (mm):	800
DEPTH (mm):	700
HEIGHT (mm):	870
WEIGHT (Kg):	93
VOLUME (m ³):	0.8
EL. POWER (kW):	7.8
VOLTAGE:	380-415 V 3N
INTERNAL BASE UNIT DIM. (mm):	760x560x340(h)
COOKING ZONES N°:	2
COOKING ZONES DIM. (mm):	796x555mm
PRODUCT SPECIFICATIONS:	2/3 Smooth, 1/3 Ribbed Inox AISI 430 Plate
IP GRADE:	IPX4
TEMP. RANGE (°C):	0-280 °C

DESCRIPTION

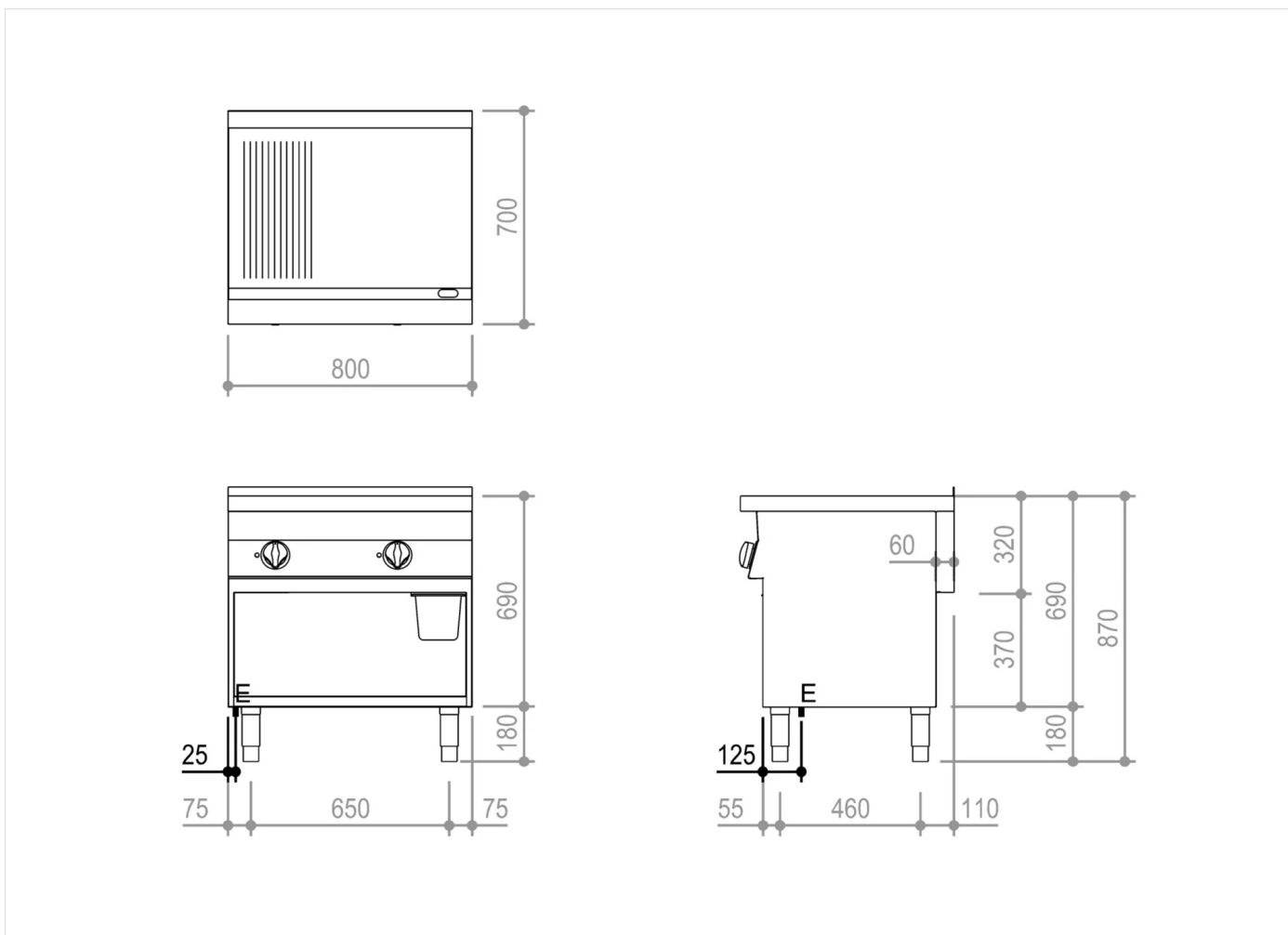
Electric griddle on open base unit with 2/3 smooth 1/3 ribbed plate in Aisi 430 stainless steel. Equipped with splash guard on three sides and a front drain channel to collect cooking liquids/fats towards a removable tray located under the cooking plate into the open base unit. Heating by armored resistances positioned under the plate. Two independent cooking zones controlled by an adjustable thermostat from 0 °C to 300 °C. Manual reset safety thermostat. Cooking surface 79.6x55.5 cm. Plate-cleaning pallet knife supplied. Open base unit made of stainless steel. Height-adjustable feet in stainless steel. The product complies with the EC regulation 1935/2004 and the DM 21/03/1973 (Materials and Objects intended to come into contact with Food) MOCA.



RANGE	CODE	MODEL	FUNCTION
MO - 70	CRI307400	NEFT78EMIVG	Griddles

ITEM

Electric griddle top with 2/3 smooth and 1/3 ribbed plate in AISI 430 stainless steel on open stand



INSTALLATION SPECIFICATIONS

(E) Electrical Connection: 380-415 V 3N 50-60Hz

