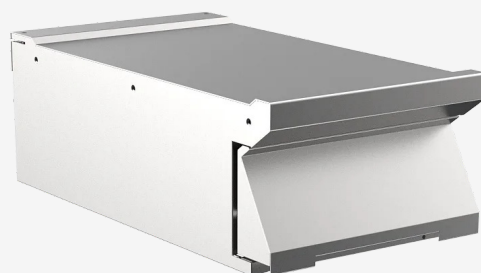


RANGE	CODE	MODEL	FUNCTION
MI - 90	MAMCOOO4890	EN94CT	<b>Neutral Elements</b>

ITEM

**400 mm width worktop unit with drawer**



RANGE	CODE	MODEL	FUNCTION
MI - 90	MAMCOOO4890	EN94CT	Neutral Elements

ITEM

400 mm width worktop unit with drawer



**TECHNICAL SPECIFICATIONS**

WIDTH (mm):	400
DEPTH (mm):	920
HEIGHT (mm):	250
WEIGHT (Kg):	32
VOLUME (m <sup>3</sup> ):	0.25

CONTAINERS  
MAX H: **EN94CT**

**DESCRIPTION**

Neutral top unit with drawer, in AISI 304 stainless steel. 20/10 pressed steel top with anti-spill front edge, designed for flush alignment with hermetic seal supplied. Worktop without flue apertures and fitted to provide stability and freedom of movement for chopping board accessory. Top designed also to accommodate water column accessory. Fully sealed underside.



RANGE	CODE	MODEL	FUNCTION
MI - 90	MAMCOOO4890	EN94CT	Neutral Elements

ITEM  
400 mm width worktop unit with drawer

